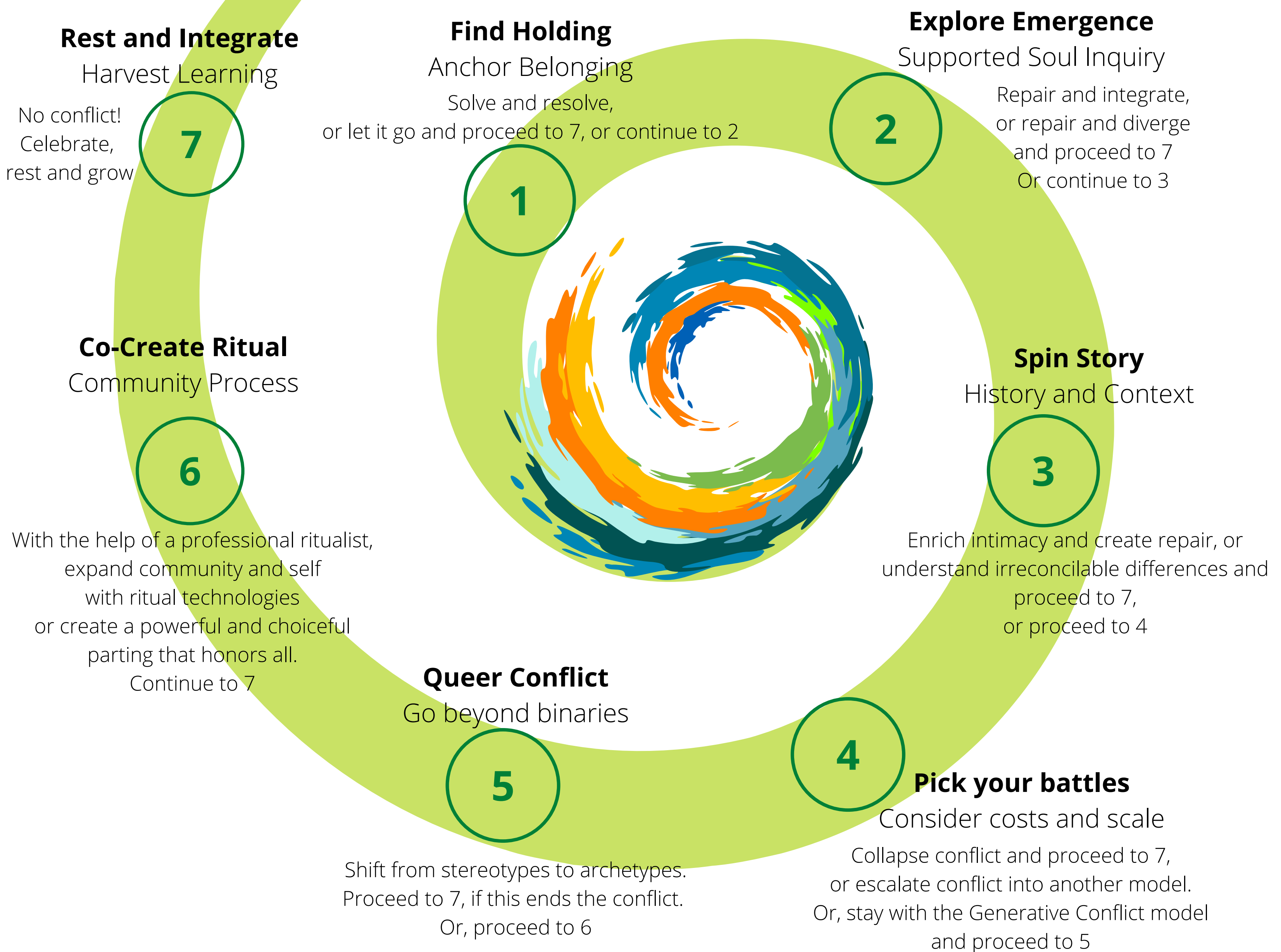


# Generative Conflict Map



The Generative Conflict Map is made from and for the movement that guides us to address harm without relying on violent systems that increase harm. A first version of this graphic was drawn by Kai Cheng Thom from the work of Caffyn Jesse and Tricia Bowler and it has been redrawn here by Caffyn. All are welcome to use, adapt, redraw and share.

You will find additional resources and writing on each section at [soulasto.com](http://soulasto.com).